



MICHIGAN DEPARTMENT OF
ENVIRONMENT, GREAT LAKES, AND ENERGY

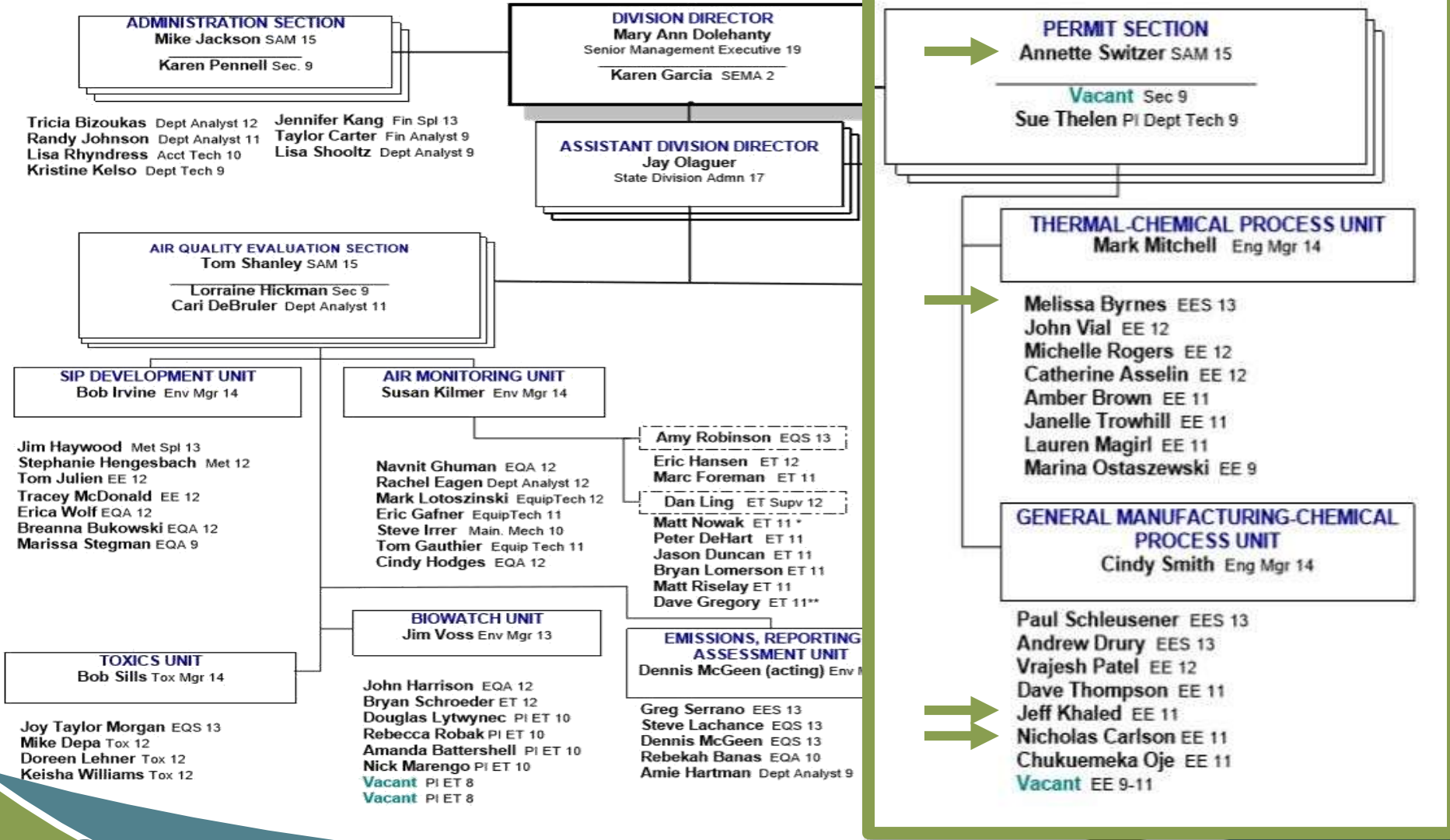
Permit to Install Applications

Air Quality Division
Permit Section

Who are we?

AIR QUALITY DIVISION - LANSING
May 1, 2019

DRAFT



COMPLETE APPLICATION CHECKLIST

P7

Modification Number _____ Company _____

Process Description _____

___ Confidential Information included

___ Is the application administratively complete?



File Home Insert Page Layout Formulas Data Review View Help Search

Clipboard Font Alignment Number Styles Cells Editing Ideas

Calibri 11 A A

B I U

Wrap Text Merge & Center

General

Conditional Formatting Format as Table Cell Styles

Insert Delete Format

Sort & Filter Find & Select

Facility Name:		Facility Address:																				
Chemical Name	CAS No.	Screening Level						Allowable Emission Rate (AER)						Proposed Emission Rate (ER)						Is Proposed Em		
		1st ITSL µg/m³	1st ITSL Avg Time	2nd ITSL µg/m³	2nd ITSL Avg Time	IRSL / SRSL µg/m³ (annual Avg)	AQD Footnote(s)	1st ITSL		2nd ITSL		IRSL / SRSL		Max Hourly ER lbs/hour	Rate (1st ITSL)		Rate (2nd ITSL)		Rate (IRSL)	IRSL / SRSL Rate Units	1st ITSL	2nd
								Max lbs per hour	lbs per month, 24-hr, 8-hr or 1-hr	Max lbs per hour	lbs per month, 24-hr, 8-hr or 1-hr	Max lbs per hour	lbs per month		Rate Units	1st ITSL Rate Units	Rate Units	Max Hourly Rate			1st ITSL ER	
Formaldehyde	50000	30	24 hr			0.08		1.5	3.6			0.0432	3.2	5	120	lbs/24-hr			3650	lbs/month	no	no

Engineer: _____ Peer Reviewer: _____ Resource: _____

Level: 1 2 3 Mentor [See the Peer Reviewer memo for details.]

Supervisor Initials: _____ Date to Engineer: _____

OLT INFORMATION

Fill out this portion of the form if the application went Off-Line. Please describe in the notes section the reason(s) for going Off-Line.

OLT Number _____ OLT application clears Part A: Initials: _____ Date: _____

OLT application clears Part B: Initials: _____ Date: _____



Application Example

- Application Purpose
- Source Background
 - Major/Minor, Violations
- Project
 - Emissions, Restrictions, Rules/Regulations
- Sticking Points
 - VOCs, SO₂, Testing, Applicability Analyses, Exempt equipment



Application Example

- New Coating Booth
- Requesting 99 tpy VOC opt-out
 - Production records from 2018 show 6.7 tpy of VOC emissions
- Other information
 - Safety Data Sheets
 - Toxic Air Contaminant Evaluation

Additional Information

- Equipment and Process Description
- Emission Limits and Federally Enforceable Restrictions
- Complete information on emitted Toxic Air Contaminants
- Applicable Rules and Restrictions

A Complete PTI Application

- What helped with minimal delays?
 - Clear descriptions of equipment and processes
 - Proposed limits and enforceable restrictions
 - Full disclosure on Safety Data Sheets
 - No use of terms “proprietary” or “confidential”
 - Emission calculations
 - Demonstrating all rules were met

Looking Forward

Clear Communication and a Complete Application:

- Pre-application meeting
- Notification
- Reaching out



© Author is licensed under [CC BY-SA](#)

How can we help?



[This Photo](#) by Unknown Author is licensed under [CC BY-SA](#)

- Correspondence and technical sheets
- Online resources
- PTI Workshops
- ROP Webinar Series
- PTI Webinar Series

Questions?

- Contact Us:

- Annette Switzer - Manager

- 517-284-6803 | switzera2@Michigan.gov

- Jeff Khaled, Engineer

- 517-284-6734 | khaledj@Michigan.gov

- Nick Carlson, Engineer

- 517-284-6738 | carlsonn1@Michigan.gov

- Melissa Byrnes, Engineer

- 517-284-6790 | byrnesm@Michigan.gov